

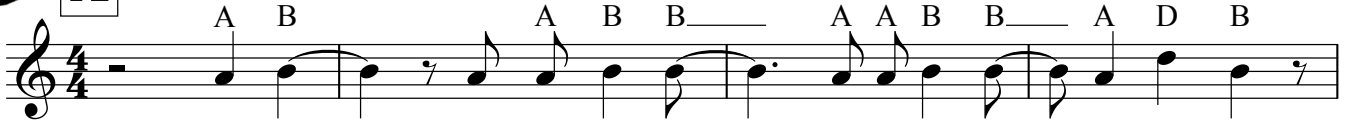


The Start Line

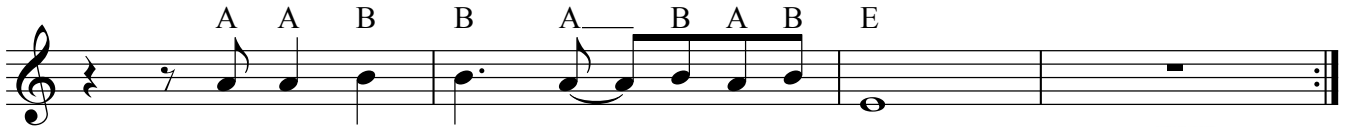
www.TrevWilliams.co.uk

Name :

A VERSE Em C



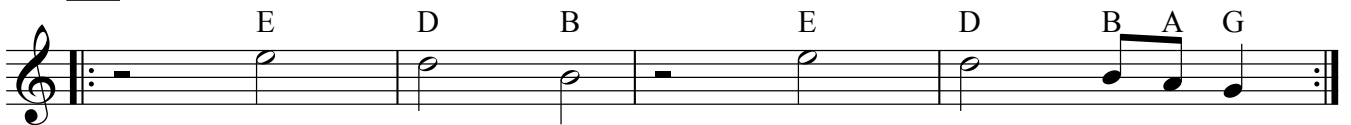
Woke up _____ on the floor_____ I cannot see_____ them no more
Put on shorts and stretch my legs_____ toss a coin_____ it lands heads



they must have gone oh _____
o pen the door _____



B PRE CHORUS G C



The Start Line is right here _____
Get ready _____ to

C CHORUS Am C



go be ing myself _____ be ing myself _____

D BREAK Em C



O _____ ver the hill _____ and far away _____
There's _____ ano ther road _____ a no ther _____ day!

Songs are often made up with a few simple ideas which are repeated!
The Start Line - has a structure a bit like this A B A B C A B C D C -
and only uses a few notes



Make a couple of simple patterns
and build them to make a song

I like running - so my song is about that,
What do you like? Write some words

